



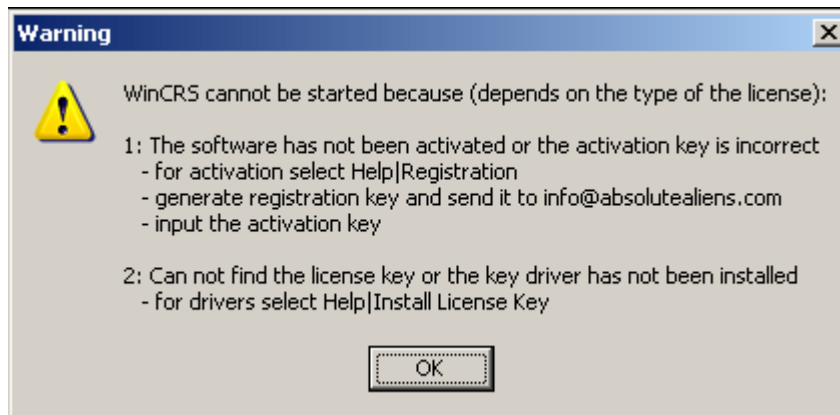
There are two different versions of *WinCPRS* license:

- (1) The software based license key which must be registered and activated. After these steps *WinCPRS* can be run in all those computers where it has been activated. The purchased license package consists of a certain number of installations, and Absolute Aliens Oy keeps records of used licenses.
- (2) The hardware license key based on the physical license key, the dongle. *WinCPRS* can be installed into as many computers as the user wants but it can be used in time only in that computer where the license key is connected (USB or printer port depending on the type of the dongle).

The details of installation depend on the version of the license. First installation steps are common to both license types.

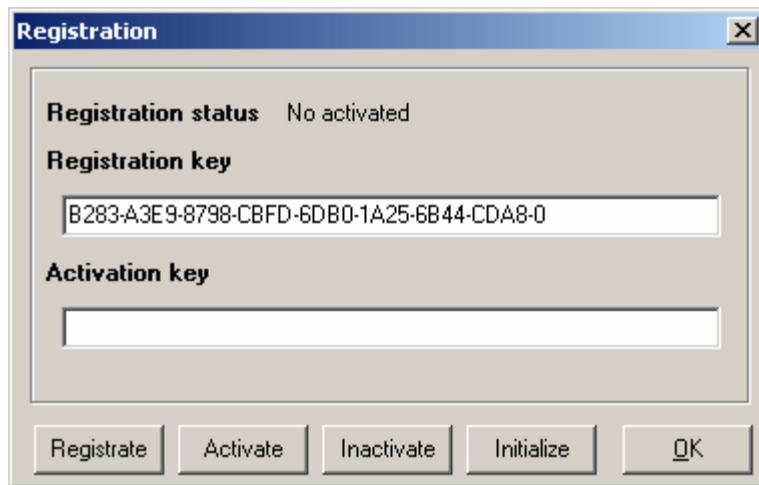
1. Common installation steps

1. After purchasing *WinCPRS* license the customer can download the installation package from the downloading server. Detailed instructions are sent by email to the customer.
2. Unzip the package in some directory of the computer. Keep this package for future use.
3. Run the program *setup.exe* and follow the instructions of the installer program. *WinCPRS* software can be used in Windows 95/98/ME/NT4.0/2000/XP/Vista/7 systems. To install the software in Windows NT4.0/2000/XP/Vista/7 you need either Administrator or Power User rights.
4. When *WinCPRS* is run first time the following message is shown:

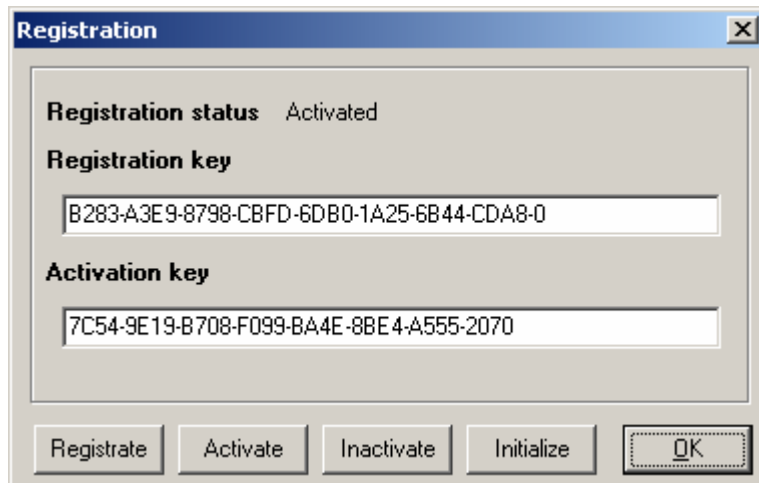


2. Software license key

5. Select *Help|Registration*. This opens the Registration dialog.



6. By pressing *Registrate* button you can create the *registration key*. This key is specific for the computer. Copy this key and send it to the email address *support.absolutealiens.com*.



7. The *activation key* is sent to you by Absolute Aliens Oy. Input this key into the activation key field and press *Activate* button. If the activation key is valid the status of the registration will be *Activated*. Now **WinCPRS** is ready for use.

For more detailed description of the software license key see the **WinCPRS** help page *Miscellaneous|License registration dialog*.

3. Hardware license key

5. Select *Help|Install License Key*. This starts the installation program of the license key drivers. Follow the instructions of the installer program. For installation you must have Administrator or Power User rights.
6. Close *WinCPRS*.
7. Connect the license key dongle to the computer. Windows system informs that a new device has been detected and installed.
8. Run *WinCPRS*. If the installation of the drivers were successful *WinCPRS* will start without any warning message and all features are available. The status of the license key can be checked by selecting *Help|License Key Info*.

For more detailed description of the hardware license key see the *WinCPRS* help page *Miscellaneous|Hardware license key*.

IMPORTANT: Do not connect the license key dongle before installation of the key drivers since it is possible that incorrect drivers are installed or the key is erroneously registered by Windows system.

IMPORTANT: The hardware license key is not compatible with *Microsoft Remote Desktop*, *Windows Terminal Server* or *Citrix Winframe*. If remote control is needed use other software tools (for example *TeamViewer*).

4. Help properties of *WinCPRS*

The proper use of the help functions of *WinCPRS* in Windows Vista or Windows 7 systems needs that the help properties of Windows system are updated. This can be done by installing either *Windows Vista 32/64 bit help update.msu* or *Windows 7 32/64 help update.msu* package according to your Windows version. These packages can be found from the installation directory of *WinCPRS* (normally C:/Program Files/Absolute Aliens/WinCPRS).

5. Database functions of *WinCPRS*

If this software is used in multi-user environment, or the software is started from another computer over the network, the database functions of the software assume that the user has rights to modify the database related configuration file PDOXUSR.NET. This file can be normally found on the root directory of the C-drive. The location of this file can be checked/changed by running the program BDEADMIN.EXE which can be found from the installation directory of *WinCPRS*. On the *Configuration* tab sheet of this program (on the left field of the program) there is a directory *Configuration\Drivers\Native\Paradox* which has the property NET DIR (on the right field). This property tells the directory path where the configuration file can be found.

Contact: support@absolutealiens.com

Internet: www.absolutealiens.com